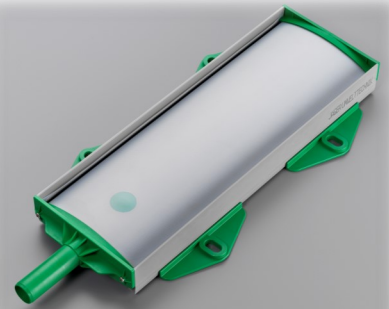


Strip Diffuser

Diffuseur ultra
fine bulle



Réalisation Barmatec

DIMENSIONS

	A (mm)	B (mm)	C (mm)	D (mm)	Alimentation (mm)	Hauteur (mm)	Poids (kg)	Surface Active (m ²)	Débit maximum (m ³ /h)
SD 180/1500	1500	1480	1620	1720	32	53	5.0	0.24	29
SD 180/2000	2000	1980	2120	2220			6.5	0.32	38
SD 180/3000	3000	2980	3120	3220			10	0.48	58
SD 180/4000	4000	3980	4120	-			13	0.64	76

MATERIAUX

Membrane	Polyuréthane
Profilé standard	PVC
Alimentation et clapet anti retour	PP 30% GF
Plaque de base	PP
Raccord union	A4 / AISI 316

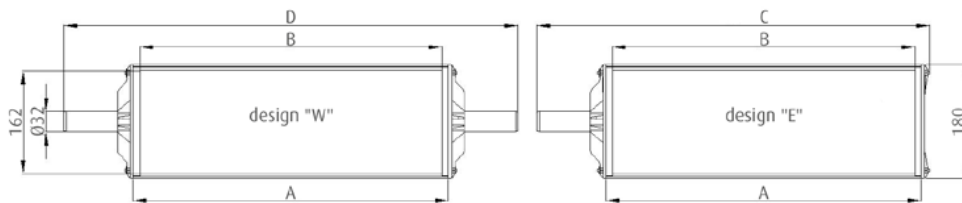
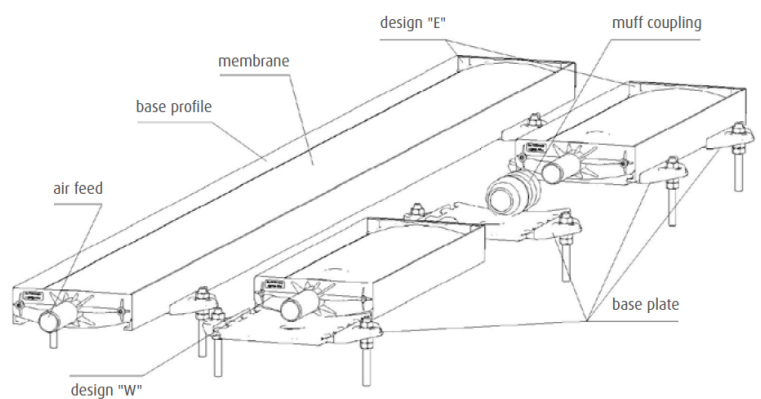
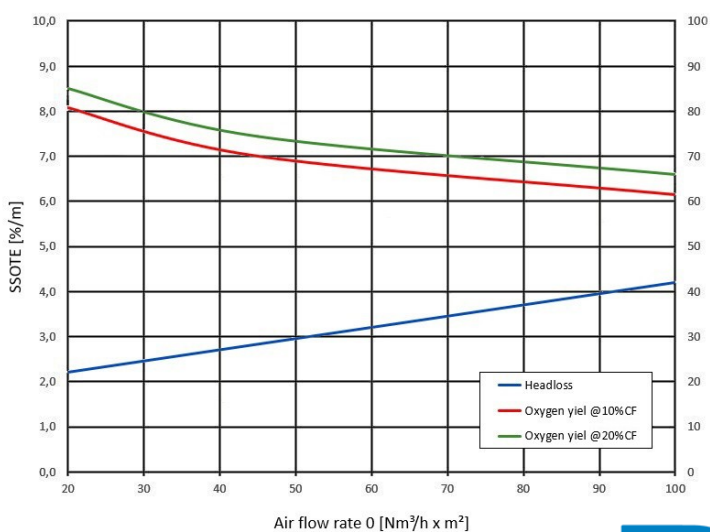


SCHÉMA D'INSTALLATION



BARMATEC

+33 78 494 33 81 olivier.savalli@tecnoconverting.com
www.systemeaeration.fr

SPECIALISTE EN SYSTEMES D'AERATION